

## Some of our NEW PRODUCTS for 2008

### **Doppler addition for the Navigator Diver Held Sonar and Guidance system**

Start with a GPS location, make your dive while the Doppler tracks your movements and overlays your updated position onto the Navigator mapping software. Position auto-correction may then be accomplished by surfacing or allowing the floating GPS to break the surface of the water to get an updated reading. Other new items for the Navigator include an underwater digital camera, and the Underwater Head Mounted Display.



Navigator unit with Doppler attachment

### **Sea Wolf 2**

This redesigned model of our original SeaWolf is a multi-purpose, highly adaptable vehicle that packs a lot of thrust into a small package. Boasting 4 - two horsepower thrusters in a frame measuring only 36" long by 27" wide and 24" high (top of lifting handle), this unit has a higher thrust to size ratio than most other vehicles in its range. With a multitude of specialized accessories the new SeaWolf2 has the power to get the job done.



### **Sediment Sampler**

The sediment sampler add-on for the Stealth2 and SeaWolf2 ROV is a pneumatically powered soil sampler, with a rotating carousel. The carousel holds up to three sample jars. The sediment sampler was designed for soft soil, and will take a sample up to 6.5 inches deep depending on sampling conditions and hardness of soil.



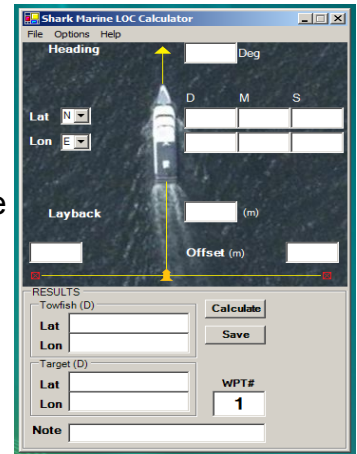


4-23 Nihan Dr., St. Catharines,  
 Ontario, Canada. L2N 1L2  
 Phone: (905) 687-6672  
 Fax: (905) 687-9742  
 E-mail: sales@sharkmarine.com



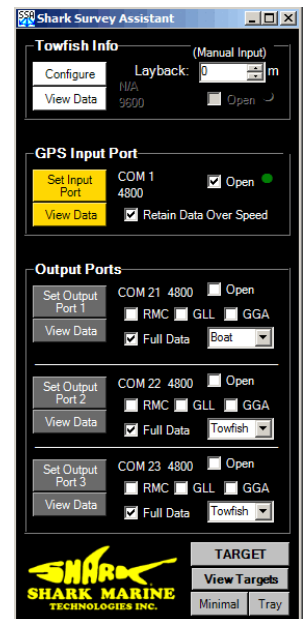
### Layback Offset Calculator

The Layback and Offset Calculator 2.0 was designed to be used as an aid for calculating a target's position in underwater surveying activities. This program automatically calculates the target's position given the boat's GPS location as well as a known layback of the towfish and offset of the target.



### Shark Survey Assistant

The Shark Survey Assistant (SSA) takes a GPS input and distributes that information to three separate ports to be received by other surveying or navigation software. The output data may be configured in a variety of formats and data adjustments. While conducting a survey, the SSA also allows the user to log targets to a file along with a text note for immediate reviewing once survey operations are complete.



**For more information on these products, see the brochures contained on this CD or contact us.**

**Be sure to visit us at OCEANS 2008, Quebec City, Sept. 16, 17 and the IADRS Conference in Fairfax, Virginia Sept 24 - 27.**