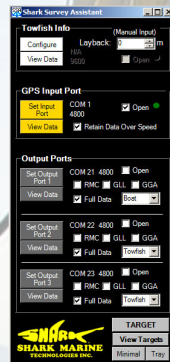


Shark Survey Assistant



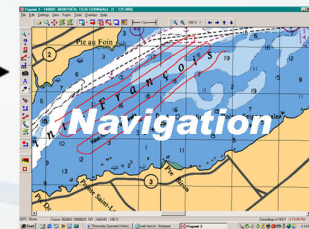
- Single GPS Input



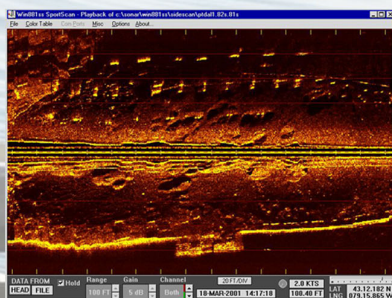
- Multiple Outputs



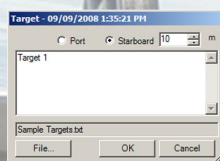
Other Software



- Add Layback to GPS output for Accurate Towfish Position



- Save Targets



- View Target Lists at Any Time

Date	Time	Latitude	Longitude	Heading	Comment
9/9/2008	1:24:31 PM	43 11 04567 N	079 14 89420 W	0	target 1
9/9/2008	1:25:39 PM	43 11 24967 N	079 14 89420 W	0	target 2 remains of pillar
9/9/2008	1:26:10 PM	43 11 33967 N	079 14 89420 W	0	target 3 reveal for closer inspection
9/9/2008	1:26:30 PM	43 11 38967 N	079 14 89937 W	0	target 4 log or stump
9/9/2008	1:27:07 PM	43 11 50767 N	079 14 89420 W	0	target 5 pipe
9/9/2008	1:27:29 PM	43 11 57377 N	079 14 89420 W	0	target 6 sunken ship

- Works With ANY Towfish Such as, Magnetometer, SideScan, Camera

More than just a serial splitter the Shark Survey Assistant can include a layback in user selected outputs to show the towfishes actual position for a more accurate survey. It can also save targets using the Towfish GPS data and a manually entered offset. These saved target lists may be viewed at any time by the user.

For More Information Please Contact Shark Marine

www.sharkmarine.com
sales@sharkmarine.com
phone : (905) 687-6672